



New Fields in Bidmate, Sharing Parts Lists, Easier Printing, Highlighted Price Book Prices (V20.0.X.537)

We've added enhancements to Bidmate and Partmate that simplify several workflows. With this update you can

- see your current bid and evaluation on the Evaluate Parts screen in Bidmate. ([Page 1](#))
- share Bidmate and Partmate Parts Lists. ([Page 2](#))
- print reports more easily from Bidmate. ([Page 5](#))
- see Price Book prices highlighted if they haven't been updated in a while ([Page 6](#))

Bidmate: New Fields on Evaluate Parts Screen: My Bid and My Eval

Previously, the **Evaluate Parts** screen showed a single "Bid" field that updated based on your evaluation and then would be replaced by your bid. Now, the screen displays both numbers simultaneously, so you can see them both:

- **My Eval** – your evaluation for the vehicle
- **My Bid** – your actual bid amount

Evaluate Parts for Unit# 71096425; 2014 RDX, 131636 Miles, ACV: 0, Repair: UNK																					
File Edit Find Print Turn Keyboard On View Vehicle Bid Help																					
Part	All IC#s	CP	CL	Dmg	Bad	Requests				Quantity On Hand					Sold	Price Book		Buyers			
						View	SmartVin	Price	+	-	Grd	All	Your	CP		Sold	NIS		Tot	A	B
1	ENG	80735E	700	0	A		0	586	0	0	0	0	0	0	0	0	0	n/a	729	700	100.00
2	TRA	62329	500	0	A		0	128	0	0	0	0	0	0	0	0	0	n/a	525	500	65.00
3	TCS	n/a	0	0	X		0	0	0	0	0	0	0	0	0	0	0	n/a	0.00	0.00	
4	CRR	n/a	0	0	X		0	0	0	0	0	0	0	0	0	0	0	n/a	0.00	0.00	
5	FAX	n/a	0	0	X		0	0	0	0	0	0	0	0	0	0	0	n/a	0.00	0.00	
6	RAX	n/a	0	0	X		0	0	0	0	0	0	0	0	0	0	0	n/a	0.00	0.00	
7	ECM	>	@0	0	A		0	0	0	0	0	0	0	0	0	0	0	n/a	0.00	0.00	
8	RAD	59666	0	0	A		1	8	0	1	0	0	0	0	0	0	0	n/a	0.00	0.00	
9	CON	59532	NO BUY	0	A		1	0	0	1	0	0	0	0	0	0	0	n/a	0.00	0.00	
10	HLP-L	>59801	0	0	A		0	11	0	0	0	0	0	0	0	0	0	n/a	0.00	0.00	
11	HLP-R	>	@0	0	A		0	0	0	0	0	0	0	0	0	0	0	n/a	0.00	0.00	
12	TLP-L	>	NO BUY	0	A		0	0	0	0	0	0	0	0	0	0	0	n/a	0.00	0.00	
13	TLP-R	>	NO BUY	0			0	0	0	0	0	0	0	0	0	0	0	n/a	0.00	0.00	
14	WHL	>	@0	0			0	0	0	0	0	0	0	0	0	0	0	n/a	0.00	0.00	
15	WHL	>	@0	0			0	0	0	0	0	0	0	0	0	0	0	n/a	0.00	0.00	
16	WHL	>	@0	0			0	0	0	0	0	0	0	0	0	0	0	n/a	0.00	0.00	

Total Part Price/ 4180

Up/Downgra 0

COGS - Fees \$ 4180 - 1558

My Eval \$ 2622 **My Bid 3000**

Filtered by: SGI BIDMATE

VEHICLE

Exclude	Delete	Previous
Partial	Photo	Next
Include	VIN Decode	Exit

NOT Evaluated

Bidmate & Partmate: Share Parts Lists (Share as csv file)

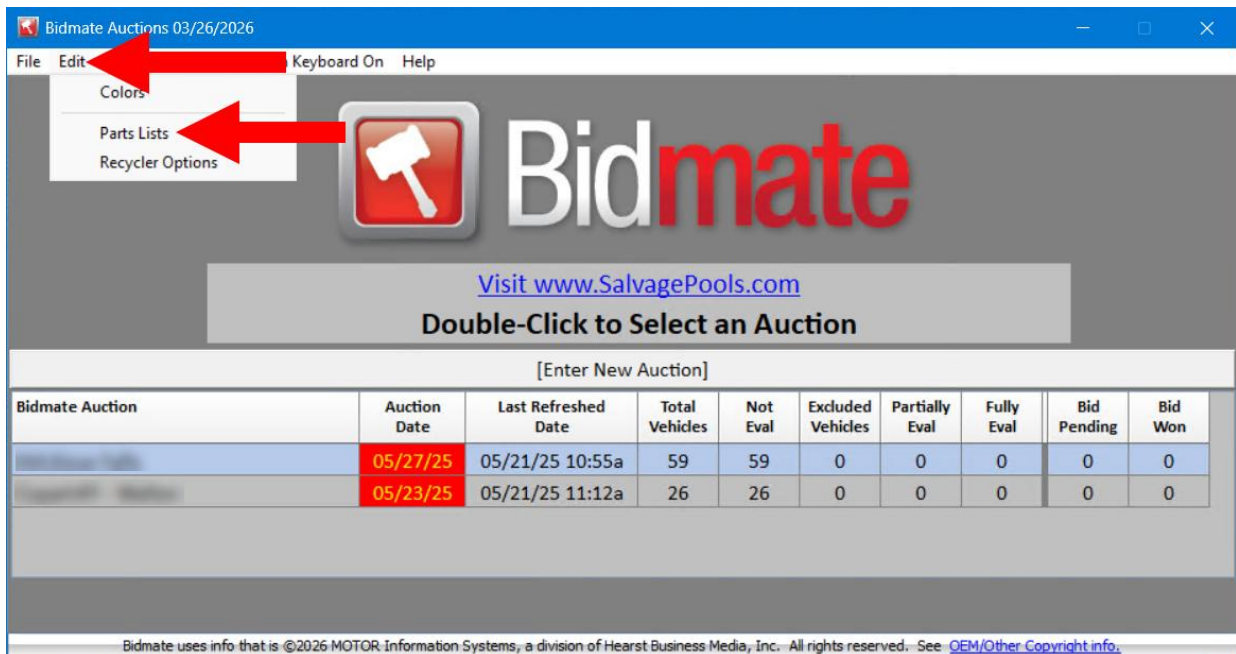
With this update, you can quickly and easily share your Bidmate and Partmate Parts Lists, and import Parts Lists sent to you. This makes it easy to share your lists with coworkers or send your lists to a different computer. The Parts Lists are exported as .csv files, which you can share via email, thumb drive, file hosting service (e.g., Dropbox), etc.

Note: While the process is the same for both Bidmate and Partmate Parts Lists, please note that Parts Lists cannot be shared *between* Bidmate and Partmate, because they serve different purposes in each program.

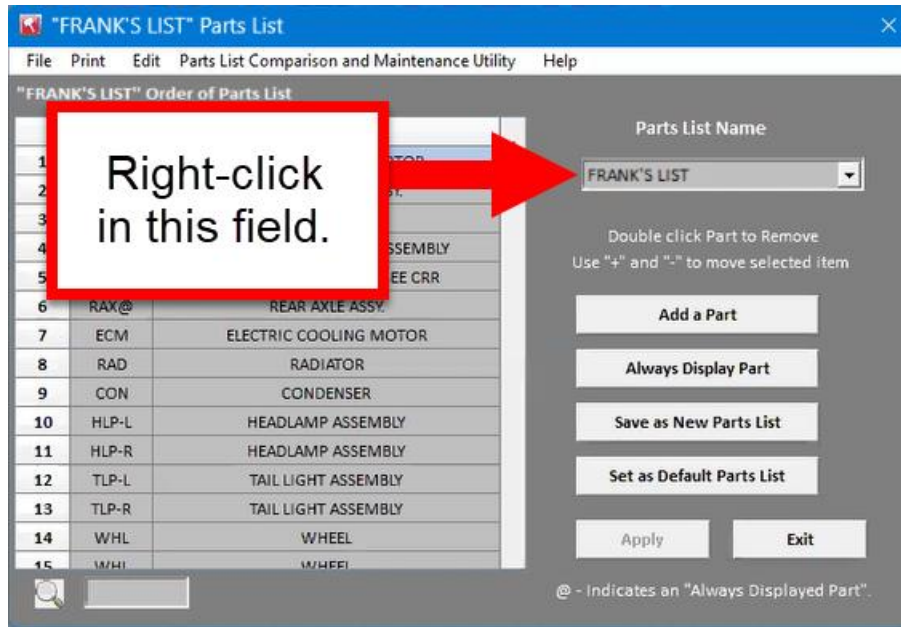
Exporting a Parts List

To export a Parts List, follow these steps:

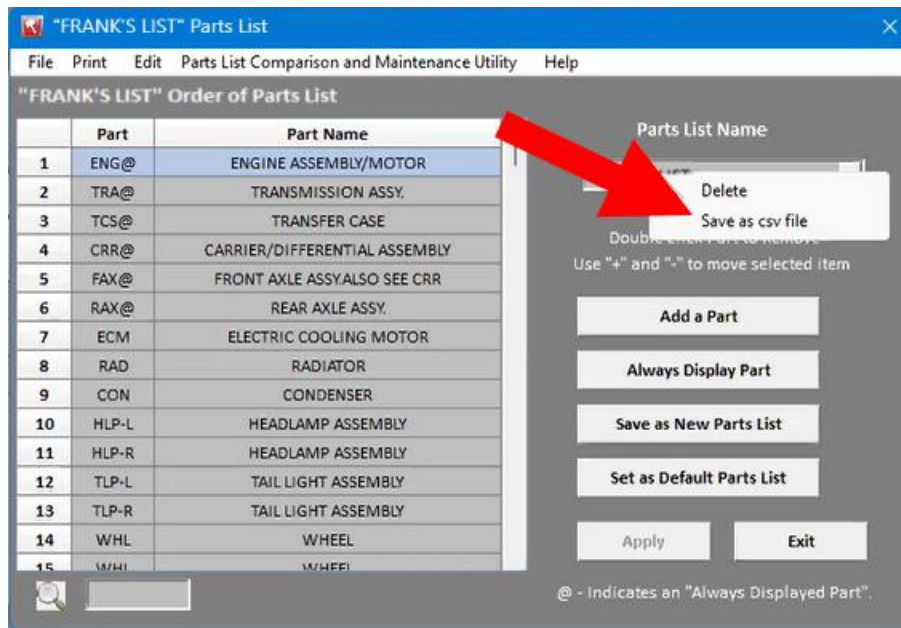
1. At the top of the screen, click **Edit > Parts Lists**. The **Parts List** window opens.



2. In the **Parts List Name** field, right-click the Parts List you want to export.



3. In the list of options that appears, click **Save as csv file**.



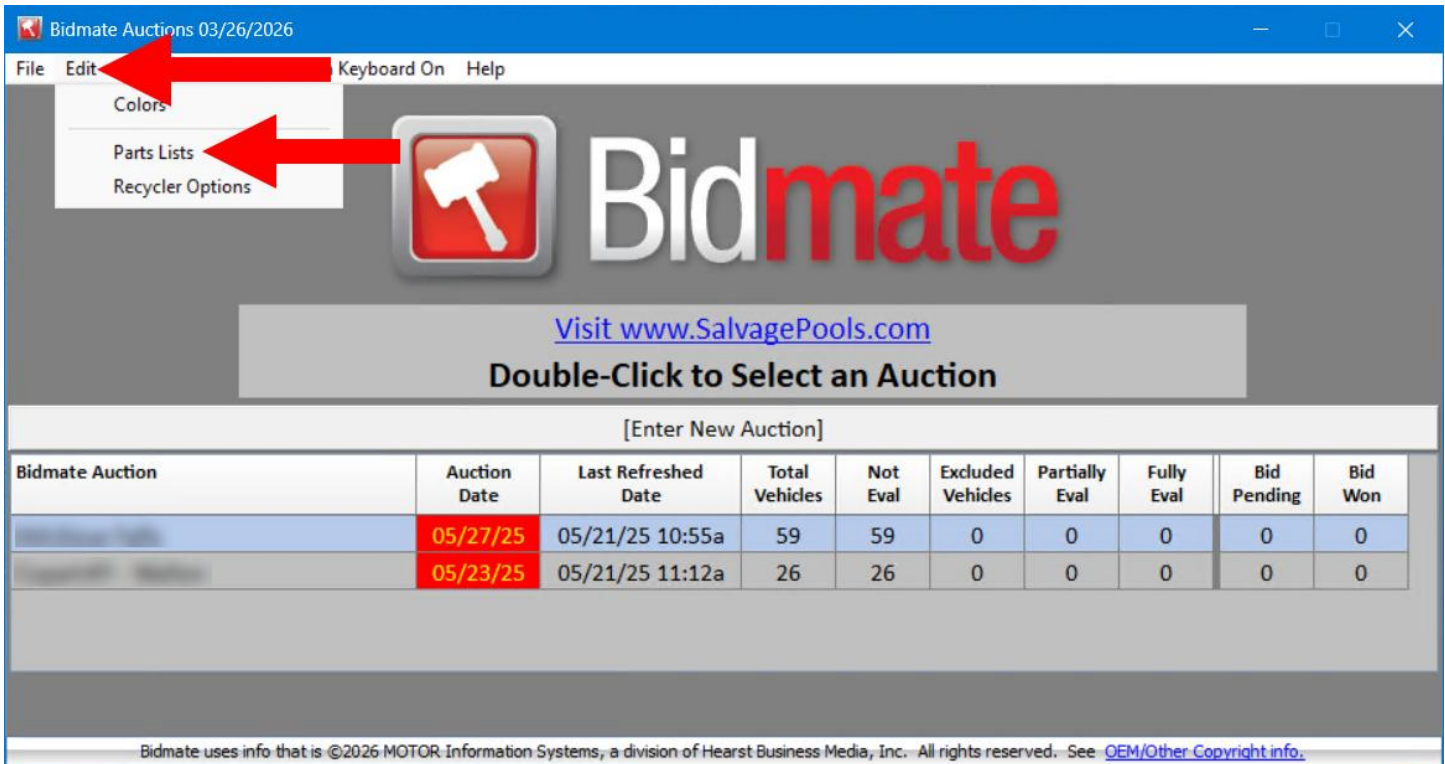
4. A file explorer opens. Name your file, choose a location to save it to, and click **Save**.

5. Share the file via thumb drive, drop-box, etc.

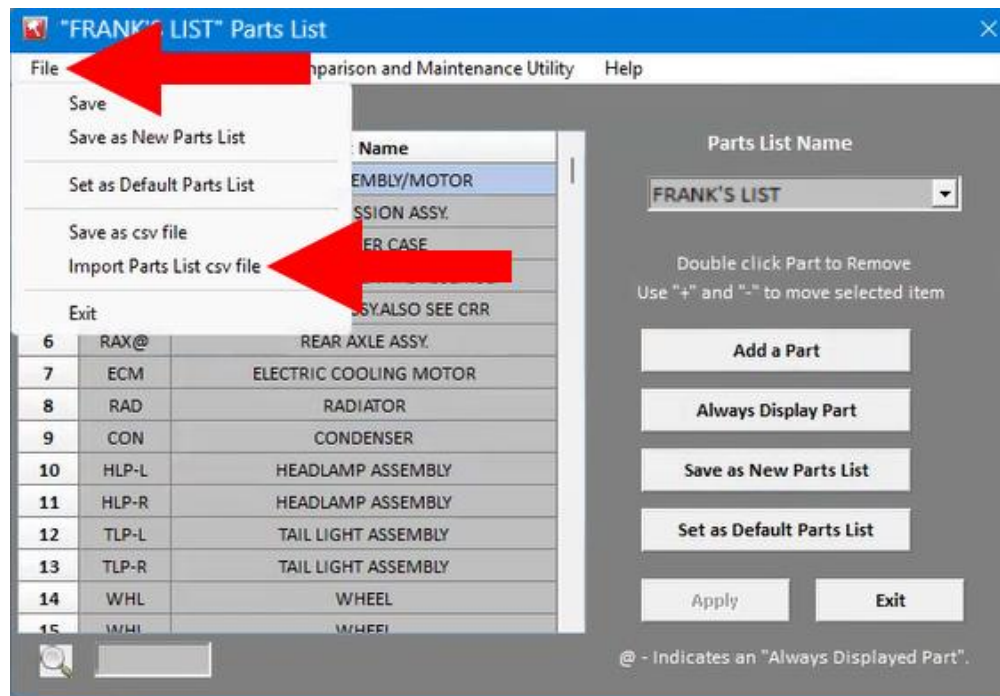
Importing a Parts List

To import a Parts List in Bidmate or Partmate, follow these steps:

1. Download the file to your device.
2. Open Bidmate or Partmate.
3. At the top of the screen, click **Edit > Parts Lists**. The **Parts List** window opens.



4. Go to **File > Import Parts List csv file**.

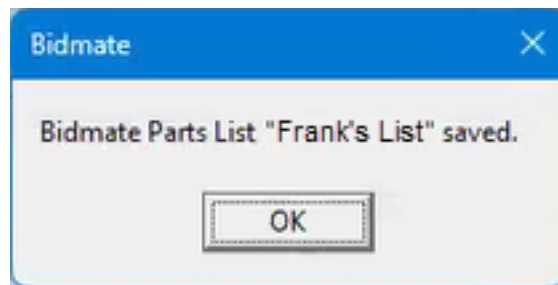


5. A file explorer window appears. Locate the file you want to import, and click **Open**.

6. If you already have a Parts List with the same name as the one you are importing, a window will appear. In this window, you can either
- enter a new name and click **Save**
 - or click **Replace** to replace (overwrite) the existing Parts List with the one you're importing. *This cannot be undone.*



7. A window appears, confirming that you have imported the list. When you click **OK**, the Parts List opens on the Parts List screen.



Bidmate: Easier, Faster Printing

We've made a change to speed up the process of printing reports from Bidmate. Once you've named and saved a report, the report will immediately open in print preview mode (as shown in the picture below), so you can review and print the report. This change eliminates the need to locate the file for the report.

The screenshot shows a 'Preview' window with a toolbar containing 'Page Width', 'Full Page', 'Print', and 'Close' buttons. The report content is as follows:

Auction Summary

Auction Name: Copart:AL - Birmingham Sale Date: 09/30/2025

Bid#	Status	Unit Number	YR	Model	Mileage	My Eval	My Bid	Win Bid	WL
129	Evaluated	65070295	2012	WRANGL	147282	M10000	10000	0	
527	Not Evaluated	71533825	2012	WRANGL	122673	0	0	0	
229	Evaluated	67782835	2015	ML	0	7563	8000	4000	W
36	Evaluated	58841365	2014	WRANGL	122817	7107	8000	0	
464	Evaluated	70550475	2012	ML	166502	M8000	8000	0	
132	Evaluated	65093415	2012	ML	123728	6625	9500	0	W
629	Not Evaluated	81693905	2008	WRANGL	44436	0	0	0	
452	Not Evaluated	70465925	2014	WRANGL	152993	0	2500	0	
599	Not Evaluated	81029995	2007	TACOMA	0	0	0	0	
204	Not Evaluated	67145025	2007	CORVET	0	0	0	0	
496	Not Evaluated	70923305	2014	CLACLA	157524	0	0	0	
15	Not Evaluated	55117995	2014	CLACLA	60045	0	0	0	
150	Not Evaluated	65739185	2011	GLCLAS	137208	0	0	0	
502	Not Evaluated	70977555	2023	TACOMA	48322	0	5000	0	W
530	Not Evaluated	71614685	2006	ML	149026	0	0	0	
597	Not Evaluated	80950795	2009	WRANGL	249742	0	0	0	
348	Not Evaluated	69283285	2015	TUNDRA	245581	0	0	0	
399	Not Evaluated	69836925	2019	TACOMA	0	0	0	0	
627	Not Evaluated	81675795	2012	LANLR4	169158	0	0	0	
650	Not Evaluated	8388825	2003	SCLASS	38014	0	0	0	
211	Not Evaluated	67329465	2014	CCLASS	116536	0	0	0	
67	Not Evaluated	62352835	2010	GK450	0	0	0	0	
444	Not Evaluated	70367845	2014	CCLASS	182461	0	0	0	
488	Not Evaluated	70779055	2015	SIENNA	119789	0	0	0	
396	Not Evaluated	69636675	2016	AUDIQ5	0	0	0	0	
526	Not Evaluated	71514895	2017	HIGHLA	179193	0	0	0	
177	Not Evaluated	66445605	2012	SEQUOI	251712	0	0	0	
256	Not Evaluated	68126535	2006	F250SD	156668	0	0	0	
403	Not Evaluated	69936625	2016	CTRYMN	110288	0	0	0	
493	Not Evaluated	70859435	2013	CCLASS	114925	0	0	0	
661	Not Evaluated	80015685	2013	AUDIA6	74867	0	0	0	
606	Not Evaluated	81149365	2015	AUDIA6	143571	0	0	0	
387	Not Evaluated	69646695	2014	AUDIA6	140744	0	0	0	
562	Not Evaluated	80049015	2007	TUNDRA	413020	0	0	0	
581	Not Evaluated	80636675	2017	AUDIQ5	138380	0	0	0	
97	Not Evaluated	63793315	2016	BMW5	166735	0	0	0	
668	Not Evaluated	84552055	2015	CLACLA	115585	0	0	0	
264	Not Evaluated	68475795	2016	CLACLA	0	0	0	0	
189	Not Evaluated	66643175	2019	RIDGEL	61832	0	0	0	
546	Not Evaluated	71914425	2013	BMW328	172900	0	0	0	
238	Not Evaluated	67896375	2013	BMW328	122589	0	0	0	
622	Not Evaluated	81530685	2009	RCVSPT	166547	0	0	0	
294	Not Evaluated	68269415	2017	MAXIMA	112257	0	0	0	
642	Not Evaluated	82104715	2008	CCLASS	186361	0	0	0	

1 of 15

Bidmate & Partmate: Highlighted Text for Old Price Book Prices

This update highlights Price Book prices that haven't been updated within a certain timeframe. That way, you'll get a heads up for the older prices that may need review.

Sold	Price Book		Buyers
	Avg	Retail	Whole
n/a	5250	5000	200.00
n/a	0.00	0.00	
n/a	0.00	0.00	
n/a	0.00	0.00	
n/a	0.00	0.00	

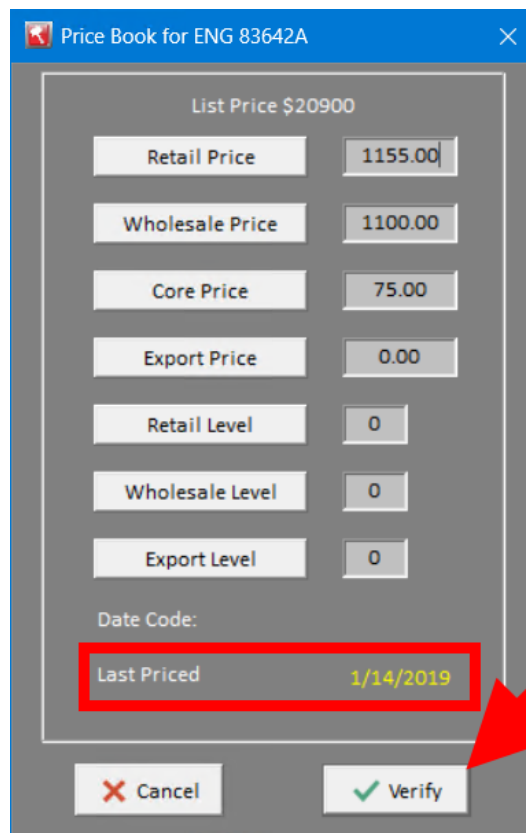
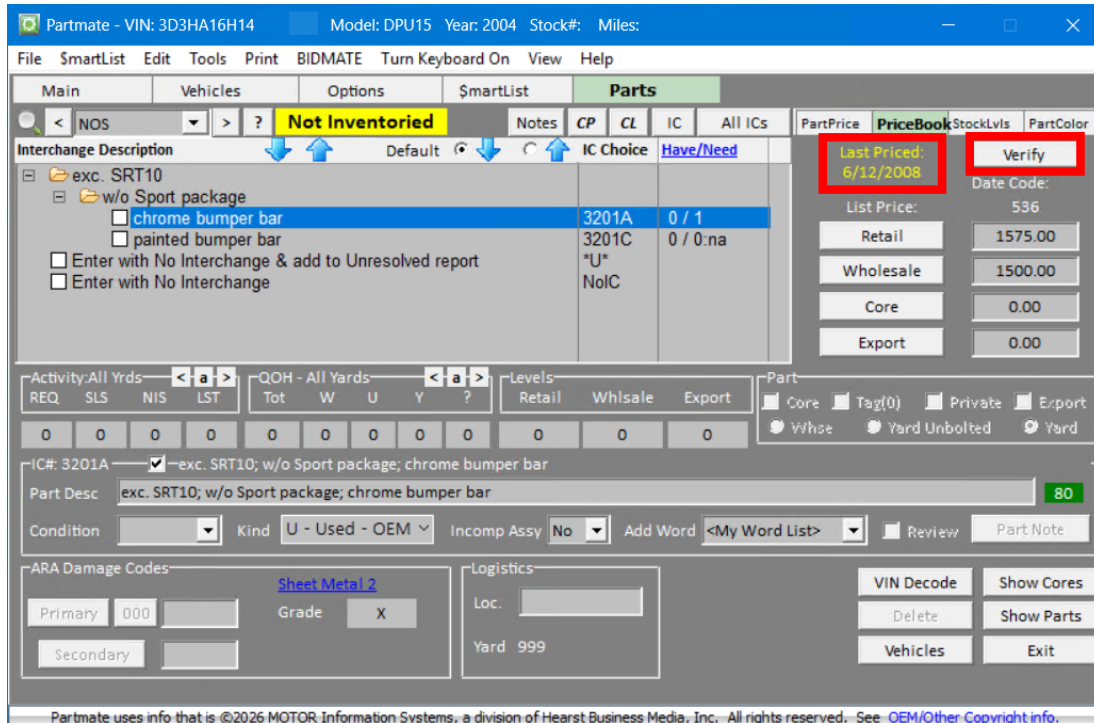
When you hover your cursor over a highlighted Price Book price, you can see the date **Last Priced**.

Sold	Price Book		Buyers
	Avg	Retail	Whole
n/a	5250	5000	200.00
n/a	0.00	0.00	
n/a	0.00	0.00	

Last Priced on: 12/9/2016

Verify Price Book Prices

Sometimes, a price hasn't been updated in a while but the price is still appropriate and the price is not outdated. In that case, you can click the **Verify** button. That will set the **Last Priced** date to today (so the Price Book price will no longer be highlighted) without changing the price.



Activating this Feature

To use this feature, you will need to set the number of days in Checkmate Retro.

1. In Checkmate Retro, go to **Change Inventory Questions** function (Checkmate Full: **6,10,3** or Checkmate Classic: **S3,3** or Checkmate Junior: contact support)
2. (Press **Enter** until you see the prompt, **Highlight Pricebook prices older than number of days.**)
3. Type the number of days you want to highlight Price Book prices for, and press **Enter**.
4. Close Checkmate Retro.

* Change Inventory Questions *

```
Force entry of 'is business' when entering or editing an AUT <Y> :
'AV' in F&S displays what part code <VUC> :
Bar code file path <C:\CheckmateFiles\UserData\Barcode\> :
Use SmartVin enabled dismantler reports (A)lways, (N)ever, or {P)rompt? <P> :
Do you want to dismantle into many yards ? <Yes> :
Enter Yard list to include in your dismantler counts, separated by commas
<999,1723,3,> :
Automatic part removal when scrapping a car ? (no verify required) <Yes> :
Automatic removal of deleted parts? (no verify required) <Yes> :
Automatic removal of sold parts? (no verify required) <Yes> :
Would you like to maintain price levels during inventory? <Yes> :
Enter Casting # during inventory ? <No> :
Do you want to use automatic stock number sequencing? <Yes> :
Enter Stock Number Prefix: <20>
Enter starting stock sequence number: <1100>
Enter the number of characters in the stock number: <6>
Should the part field indicate the date last priced? <No> :
Highlight Pricebook prices older than number of days <◇: 365_
```

Getting Help

For more information about this product, including access to online training videos and documentation, visit Products.Car-Part.com for our recycler resources.

Car-Part.com takes customer service seriously. We have a variety of support options available to help you if you have questions about our products or if you need help for any reason. Your questions are very important to us and we want your experience to be a positive one. Please contact us with any questions or concerns using any of the following methods.

Phone Support

If you have a question not covered in this guide, Car-Part.com offers phone support. Please call 859-344-1925 with your questions.

Online Support using Car-Part Messaging (iCPM)

Support technicians are available online using Car-Part Messaging (iCPM) support rooms. These technicians are available LIVE to help answer any questions you may have.

The support rooms are staffed Monday–Friday, 8:00AM–6:00 PM Eastern Time.

To enter an iCPM support room:

1. Double-click the **iCPM** icon on your desktop.



2. **Car-Part Messaging** opens.
3. Double-click the name of the **Support Room** from your bookmark list.
4. Type **HELP** and a brief explanation of your issue. A Car-Part.com support technician will answer and help with your issue.

Training

If you have ongoing training needs, Car-Part.com has a team of product training specialists to help you learn how to use our products quickly. If you are interested in product training, please call our training department at 859-344-1925 and a trainer in your area will call to schedule training.

Comments

We welcome your comments and suggestions concerning the content and organization of this guide as well as the accuracy and the usability of the instructions it contains. Email us at documentation@car-part.com. We're listening!

Published by
Car-Part.com
1980 Highland Pike
Ft. Wright, KY 41017

Copyright © 2026 by Car-Part.com. All rights reserved.

The information contained herein is confidential proprietary information of Car-Part.com. No part of the information contained in this document may be reproduced, transmitted, or disclosed to any other person without the prior written consent of Car-Part.com.

Advanced Bidmate, Advanced Partmate, Bidmate, Car Part Pro, Car-Part Auction, Car-Part.com Demand Data, Car-Part EMS Pro, Car-Part Exchange, Car-Part Gold, Car-Part Interchange, Car-Part Interchange Plus, Car-Part Messaging, Checkmate, Checkmate Listing Manager, Checkmate Rest Server, Checkmate Sales Pro, Checkmate Workstation, Compass, Coremate, Core Pricing, CrashLink, Desktop Review, Fast Parts, FastNnet, iCPM, Integrated Car Part Pro, iPro, Labelmate, Live Chat, Live Service, Order Trakker, Ordermate, Orion, Partmate, Partmate Review, Photomate, Smart Interchange, SmartVin, \$martList, Tagmate, and Trading Partners are trademarks of Car-Part.com.

Car-Part Interchange information is © 2005-2026. The Hollander Interchange is included with or is the basis for the Car-Part Interchange. The Hollander Interchange is © 2026 Claims Services Group, Inc. Some of the information available through this product contains material that is reproduced and distributed under a license from Ford Motor Company. No further reproduction or distribution of the Ford Motor Company material is allowed without the express written permission of Ford Motor Company.

All other product and company names mentioned herein are the property of their respective owners.

This edition obsoletes all previous editions.